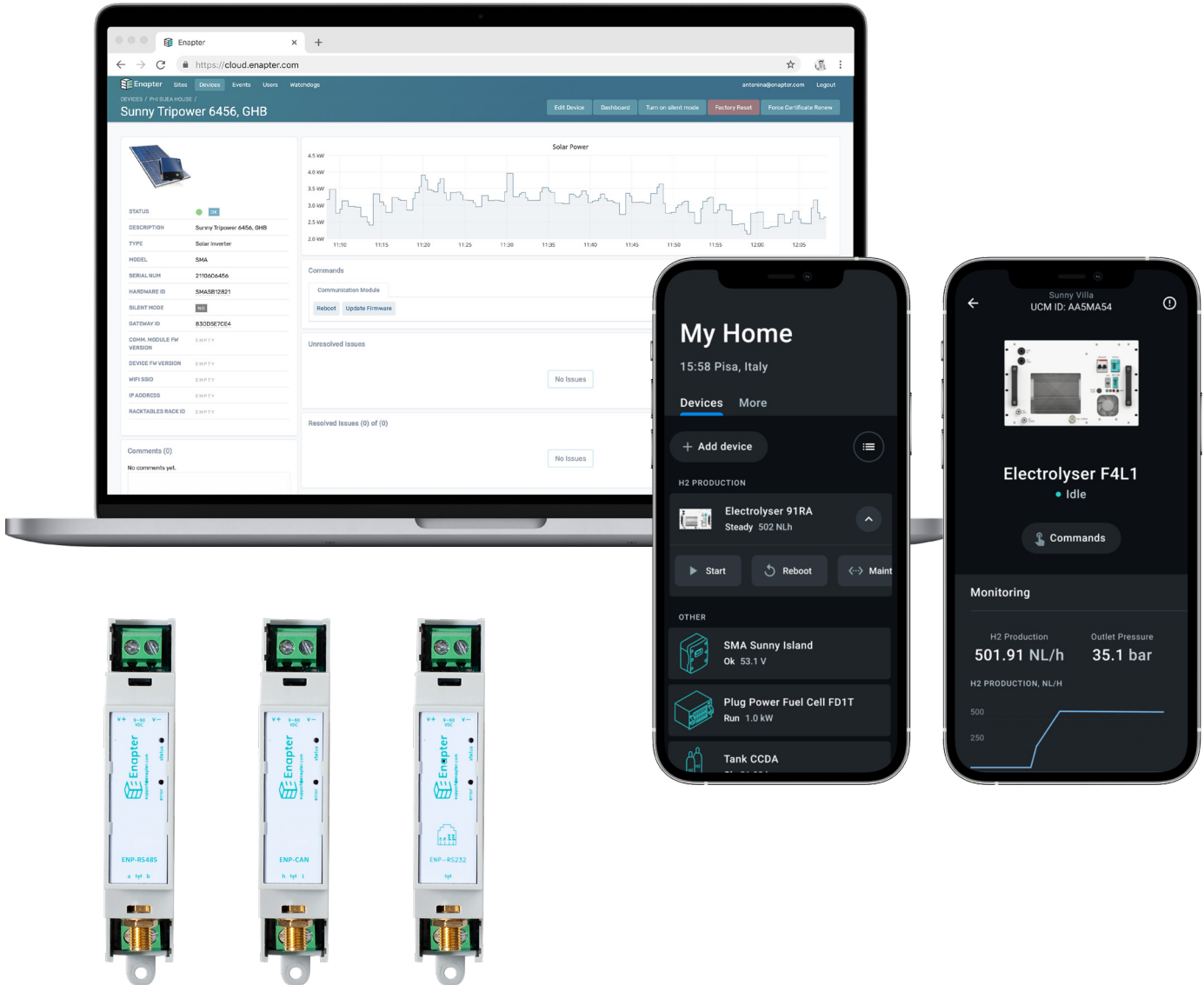
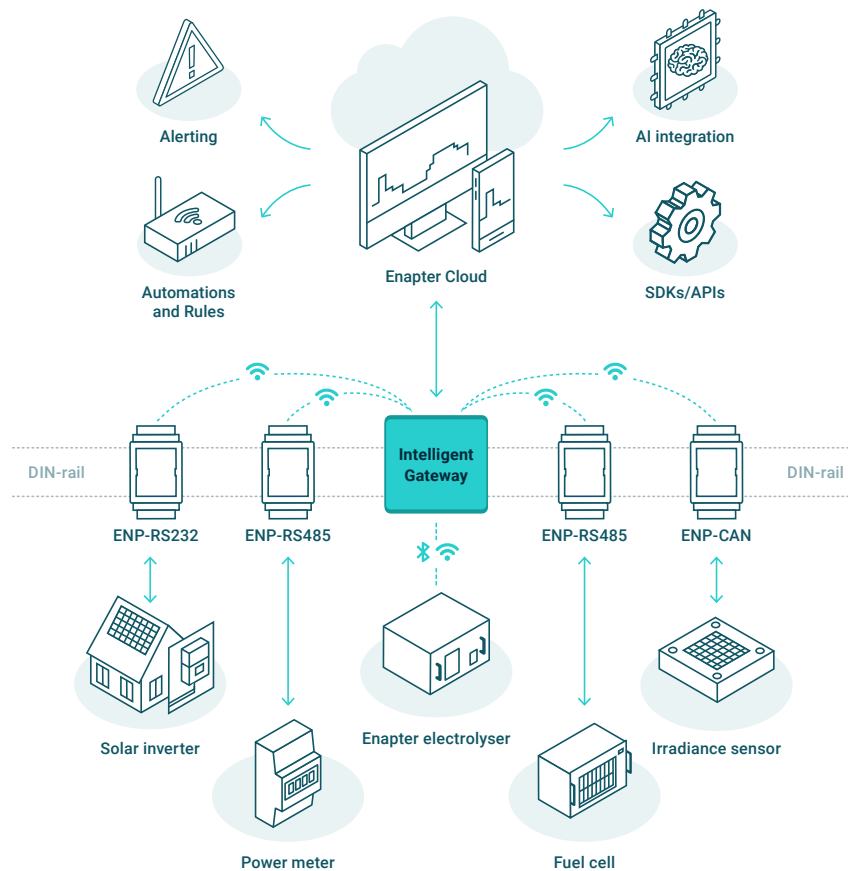


Energy Management System Toolkit



Integrate any device into a unified energy network. Manage energy generation, storage and transmission with an intelligent, customisable EMS-building toolkit.

It allows for intuitive monitoring and control of the electrolysers and dryers, as well as easy integration with third-party devices (ie. fuel cells, sensors, tanks, solar, wind, etc.). The EMS toolkit takes energy system control software to a whole new level.



A comprehensive web and mobile app dashboard is the face of the EMS toolkit. It provides full overview and control of all connected devices. And it is not only the electrolyser that can be monitored and controlled; full analytics about the energy system are also available.

The EMS toolkit helps to enable optimal performance of the system, reducing both energy consumption and costs. If deviations are detected, customizable alerts (i.e. push notifications) keep you informed to protect the energy system.

All Enapter products come with a wireless communication module for remote monitoring and control. To bring wireless connectivity to third-party devices (ie. solar panels, wind turbines, hydrogen tanks, fuel cells, batteries, digital and analog sensors, etc.) Enapter developed external **Universal Communication Modules**. The highly modular and scalable architecture collects and integrates custom sensor and energy devices data into the system.

All software is equipped with MQTT and 4.0 compatible.

Industry grade standards and protocols such as **RS-485, CAN, Modbus, SNMP, HTTP and others are available.**

Adding new devices with the EMS Toolkit couldn't be any easier. Simply connect a communication device and **scan a QR code via Enapter Mobile App to commission your new device.**

All data is stored in the Enapter Cloud which is equipped with a predictive 24/7 monitoring system. In case of offline energy systems next-generation **Enapter Gateway Software allows to store data locally.**

A rule-based management system allows for the user to set and change the parameters of how different components of the energy system interact in an automated way.

The EMS Toolkit also offers **developer tools** like Web IDE and Enapter Blueprints, as well as documentation to help system integrators and component manufacturers expand abilities of their products with Enapter solutions.